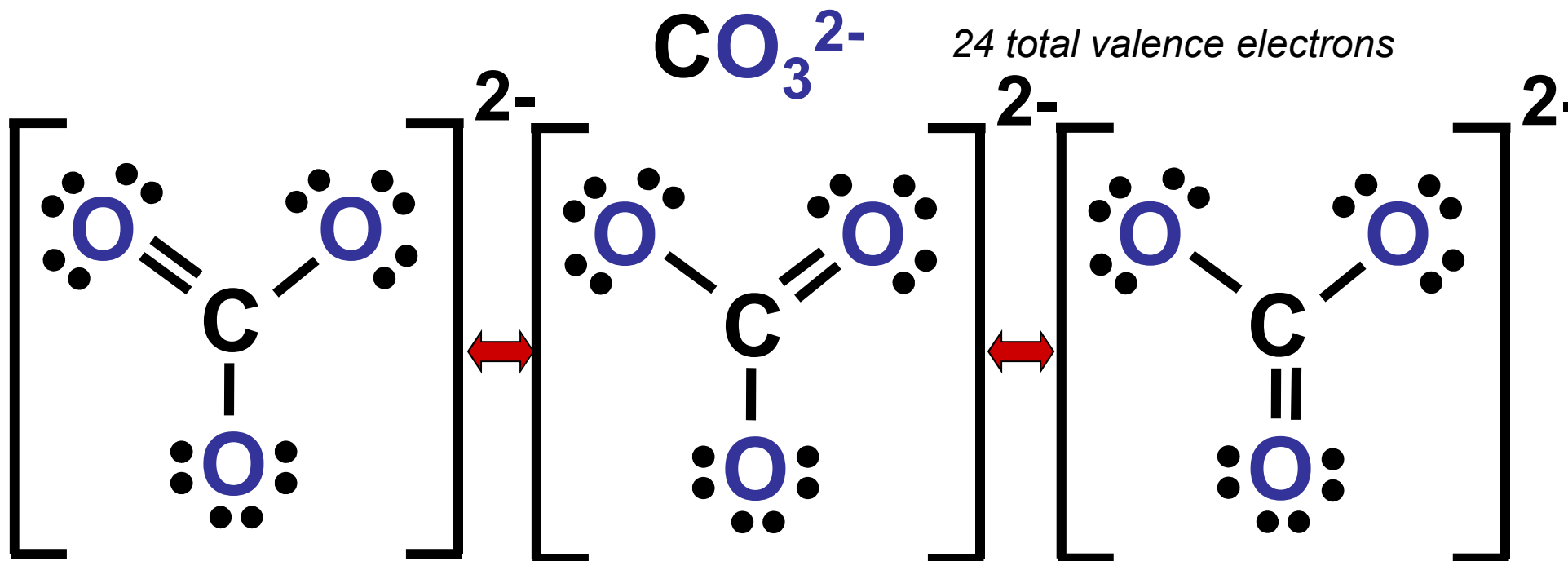


Multiple Lewis Dot Structures

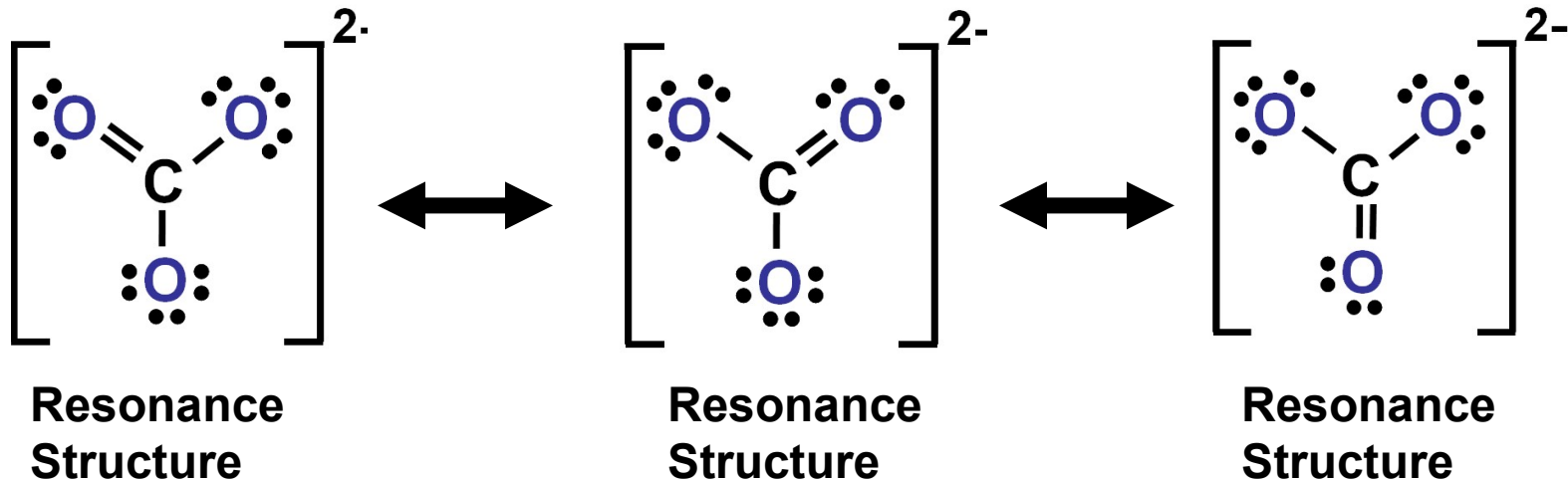


Resonance structures

One of two or more Lewis structures for a molecule that cannot be depicted by a single structure

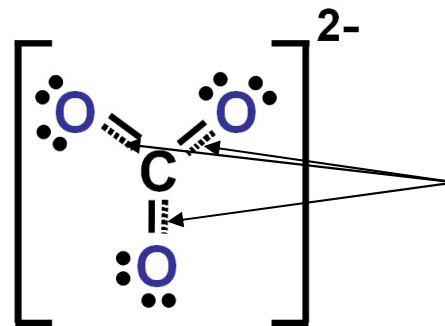


Resonance Structures



Experimentally, all three bonds are measured and have the same bond length...
...longer than a double bond and shorter than a single bond...
...i.e. the observed bonds have characteristics of both single and double bonds.

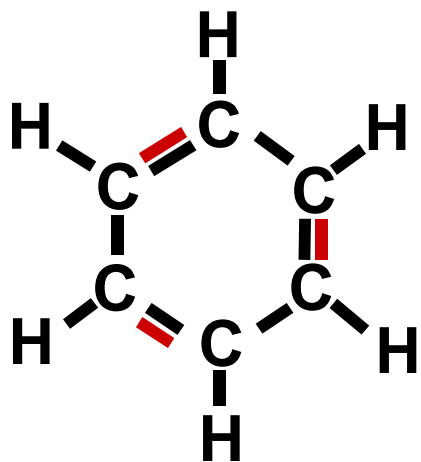
Resonance Hybrid:
Representation of the average resonance structures.



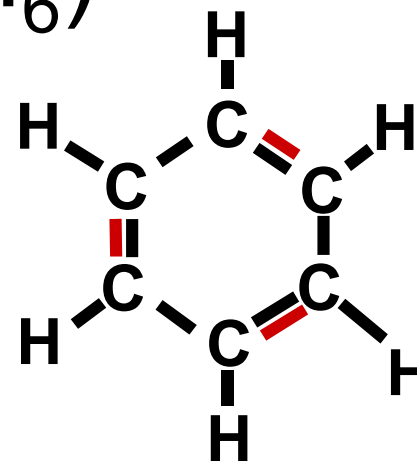
“Delocalized electrons”
spread throughout the molecule.



Resonance Structures: Benzene (C₆H₆)



Resonance



Delocalized
Electrons

